

COMUNE DI PESCIA
Microzonazione Sismica di Livello 2
Profili ESAC-Masw
Profilo ST26
Ubicazione: Collodi – San Vittori
Data: 24 aprile 2017

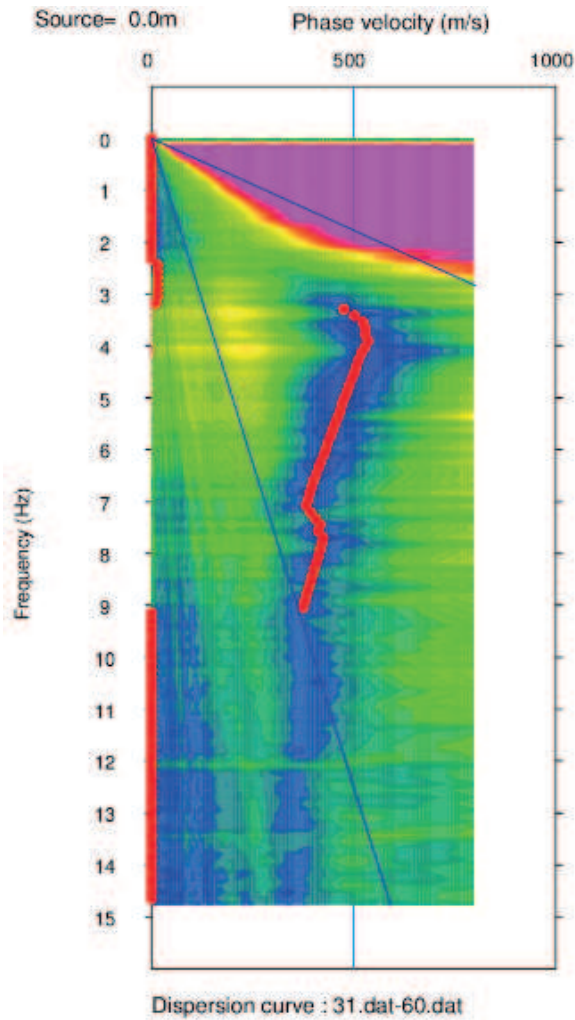
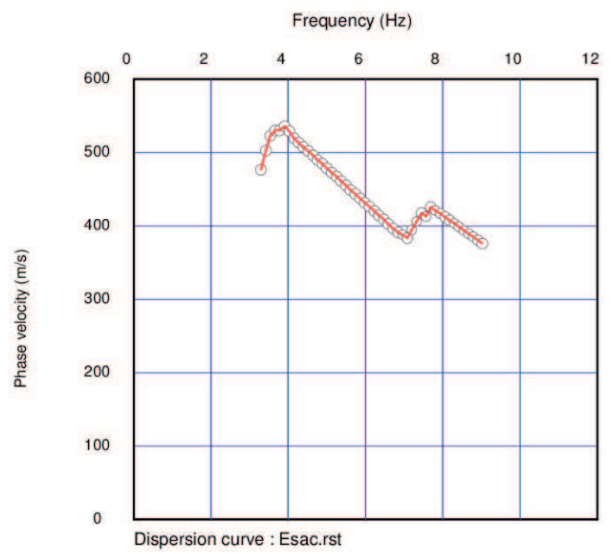


Grafico Velocità di fase-Frequenza (Esac)



Curva di dispersione (Esac)

Profilo ESAC ST26 – Collodi – San Vittori

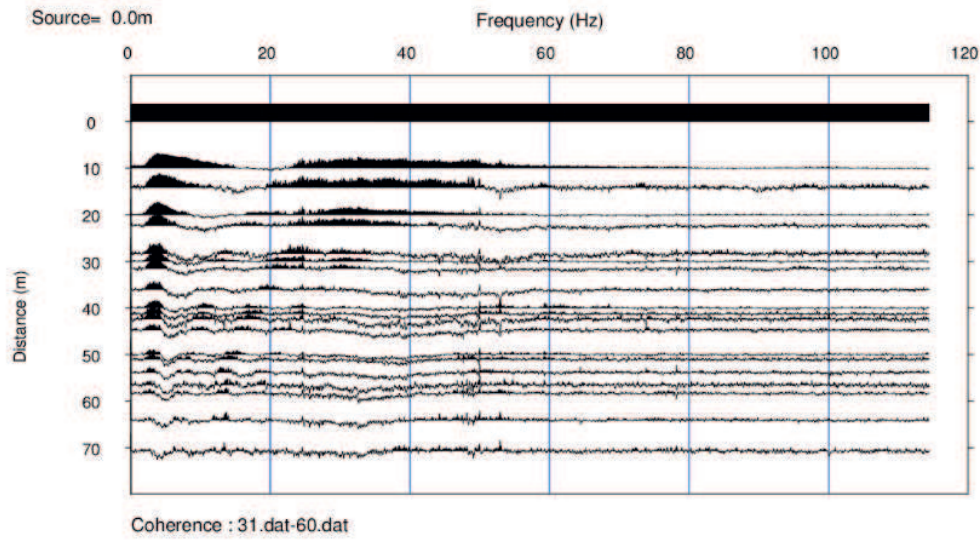


Grafico di autocorrelazione (Esac)

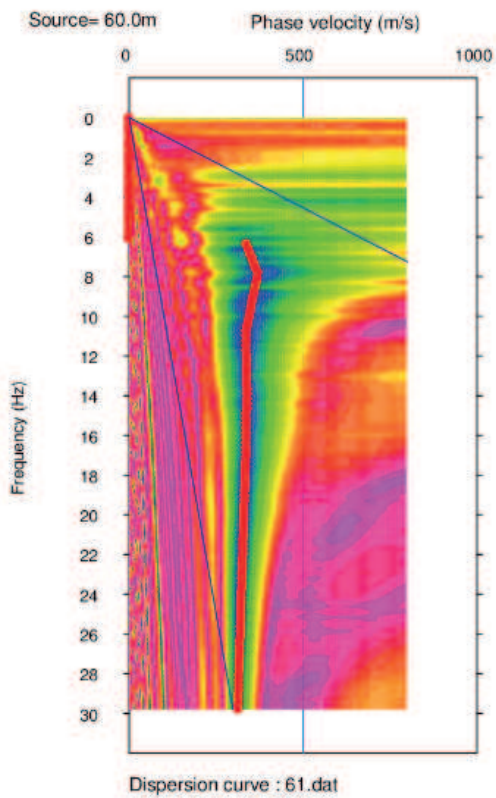
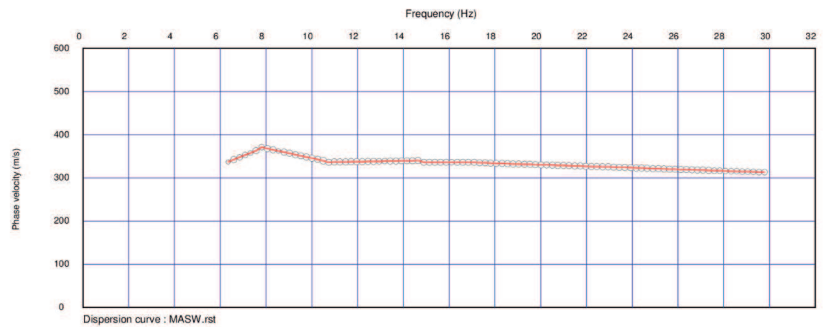
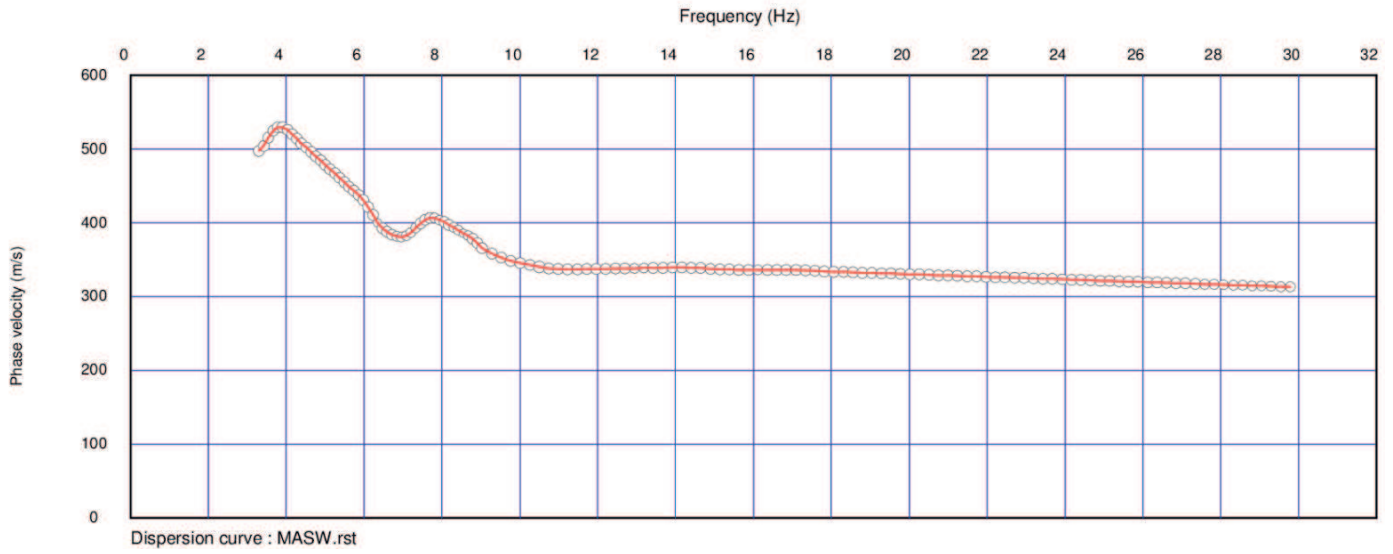


Grafico Velocità di fase-Frequenza (Masw)

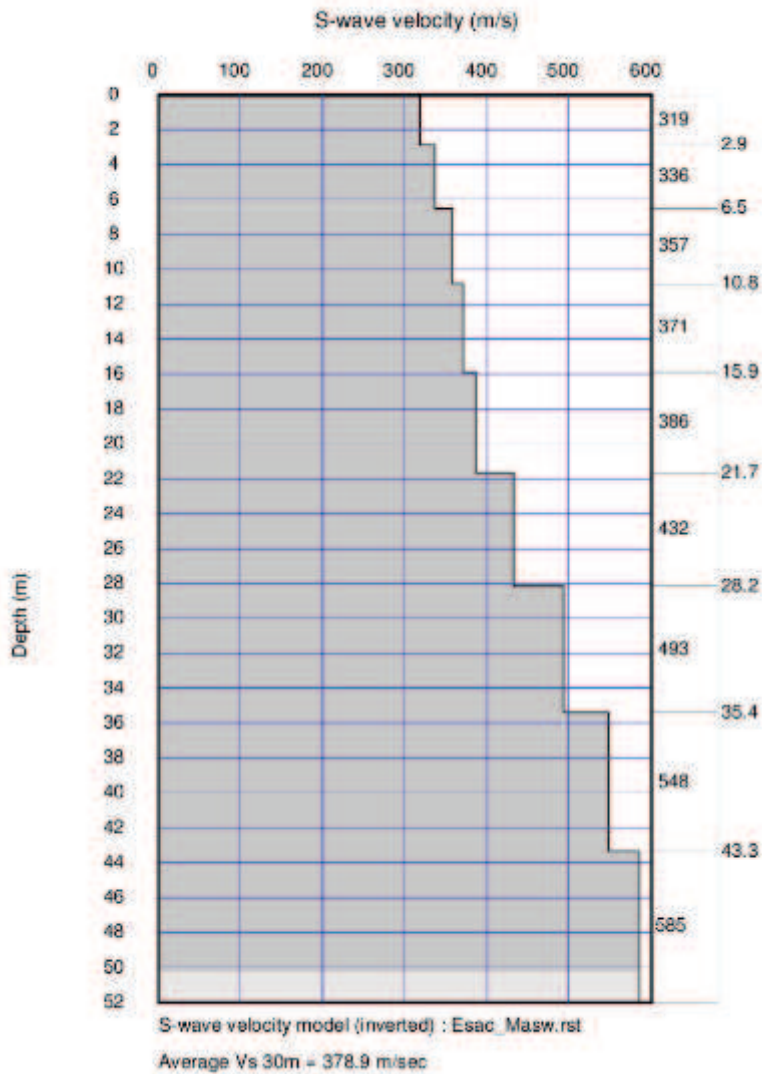


Curva di dispersione (Masw)

Profilo ESAC ST26 – Collodi – San Vittori



Curva di dispersione congiunta Esac-Masw



Ricostruzione stratigrafica indicativa congiunta Esac-Masw